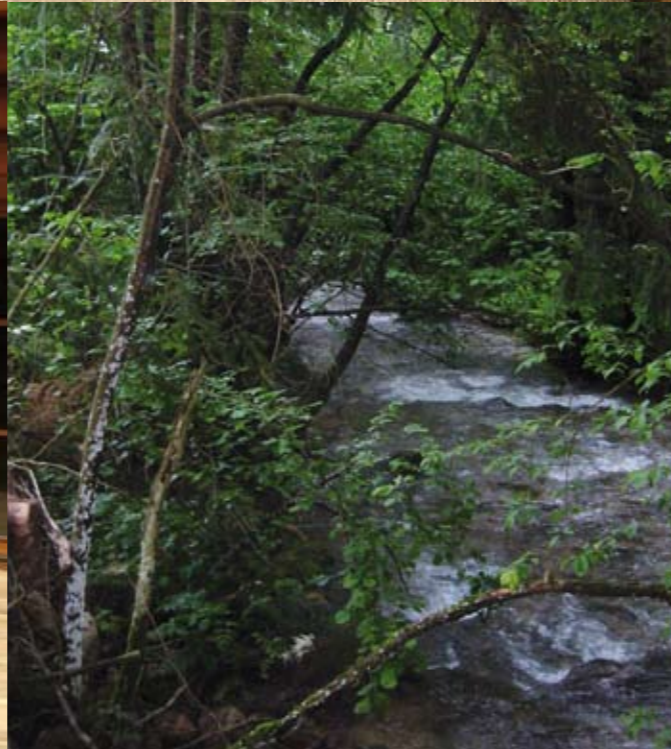




Own your dream property....today

Exclusive Mountain Chalet - Lower Tatra Mountains - Slovakia





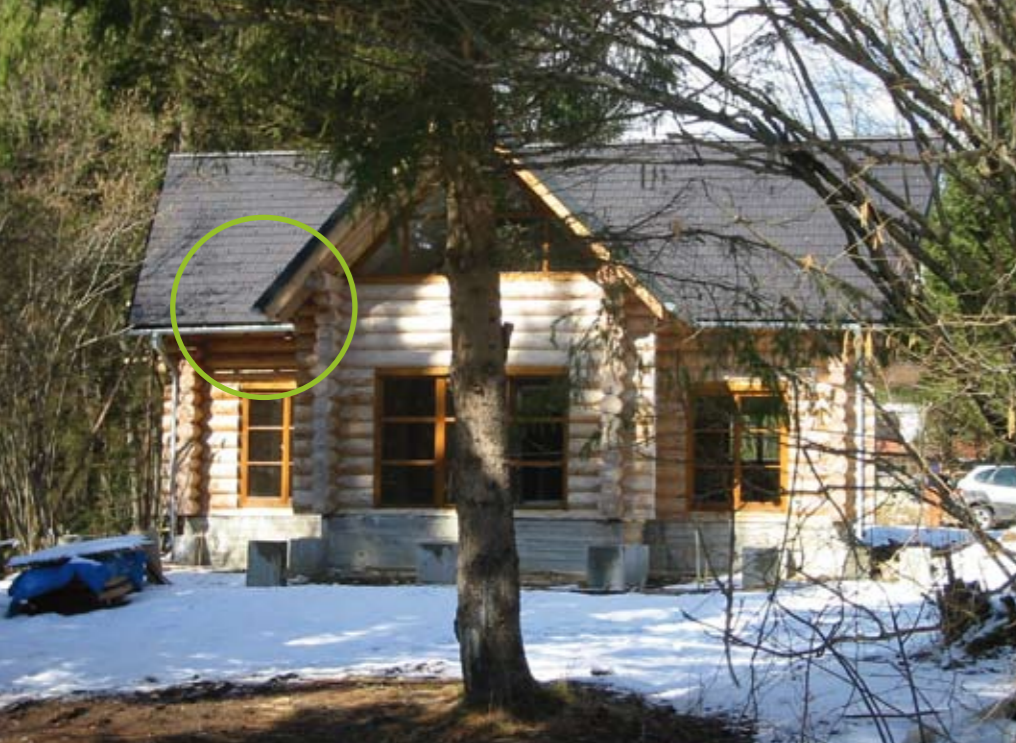
This exclusive mountain chalet is situated in the highly sought after picturesque and unspoilt mountain area of the Lower Tatra Mountains, in the village of Tale.

The chalet is south facing and enjoys panoramic views over the small mountain river alongside of the property. It is in close proximity of restaurants, shops, golf course and ski resorts.

Access to the chalet by car is guaranteed throughout the year. This perfect holiday getaway has been designed using traditional Slovak architecture combined with advanced technology. You can surely enjoy the piecefulness of the mountains and the sound and views of the river stream. This development is more than just a home. This is a lifestyle.



A place to make your dreams come true in summer & winter



An area of great natural beauty

The Tatra Mountains provide excellent year round activities, with expanding ski runs during the winter and horseback riding, hiking and playing golf in the summer.

The house is ideally situated within walking distance from the Tale Golf Club; the first 18 holes championship course in Slovakia. Opposite the golf course is Ski Centrum Tale, with 5 ski lifts, ski school, restaurants and sport shop.

www.tale.sk

The four stars hotel Partizan is situated only 300 meters away with an exclusive restaurant, bowling, nightclub and wellness centre.

www.partizan.sk.

The biggest ski centre in Slovakia, Ski Centre Chopok, is situated just 8 km from the chalet. This area connects 4 centres: Chopok South, Chopok North, Jasná and Otupné.

www.chopok.sk.

A stress free, outdoor lifestyle





A home away from home

This traditional logwood chalet, situated on a private plot of 498 m², is newly built to enjoy summer and winter activities throughout the year. It is developed turnkey and comes fully equipped to ensure trouble free operation.

Location is everyting

Facilities

- Ski lifts
- 18 holes golf course
- Restaurants
- Shopping
- Nightclub
- Wellness centre
- Bowling

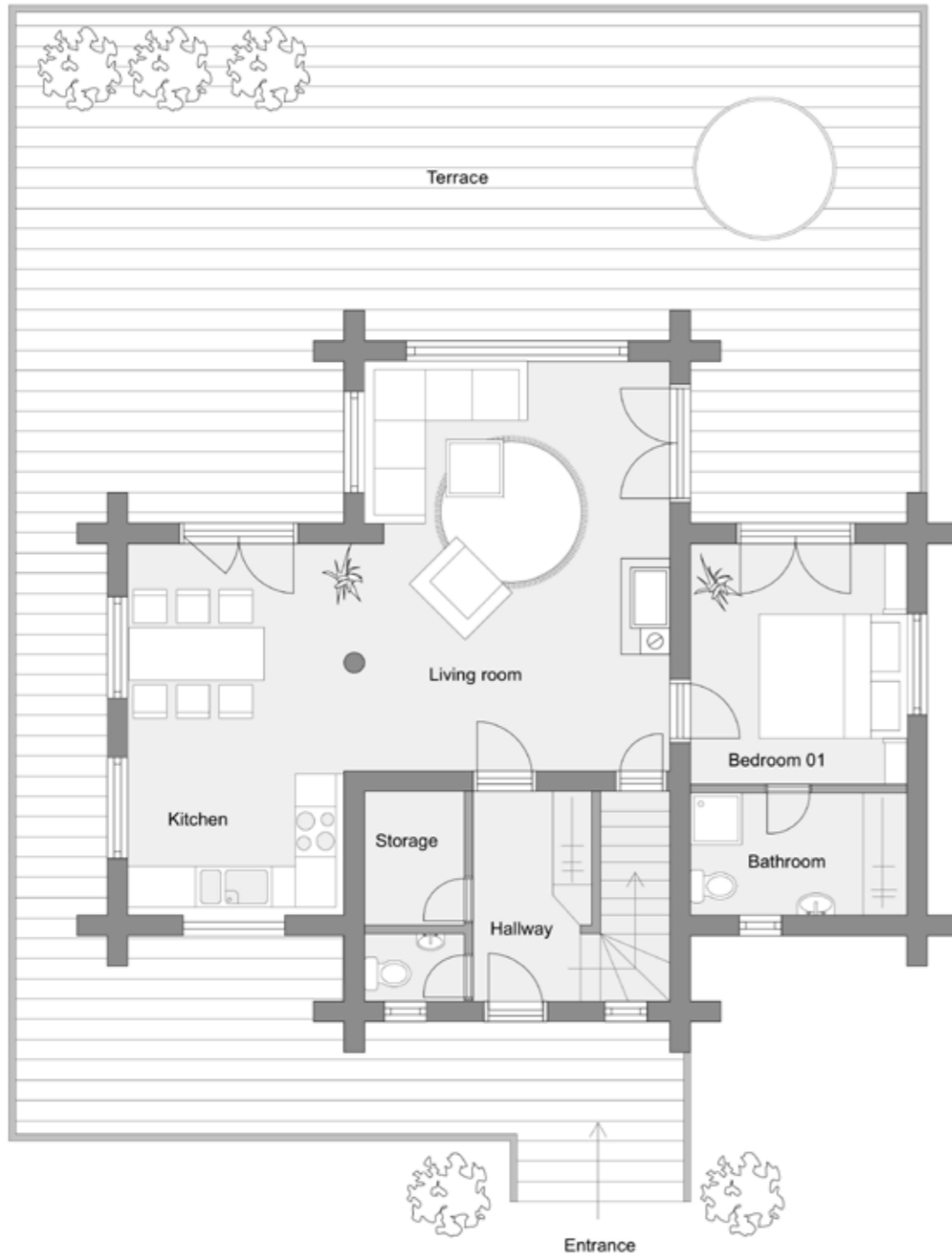
Leisure activities

- Golf
- Skiing
- Hiking
- Cycling
- Climbing
- Fishing
- Horse riding

Functional & creative design

by Slovakian & Dutch experts





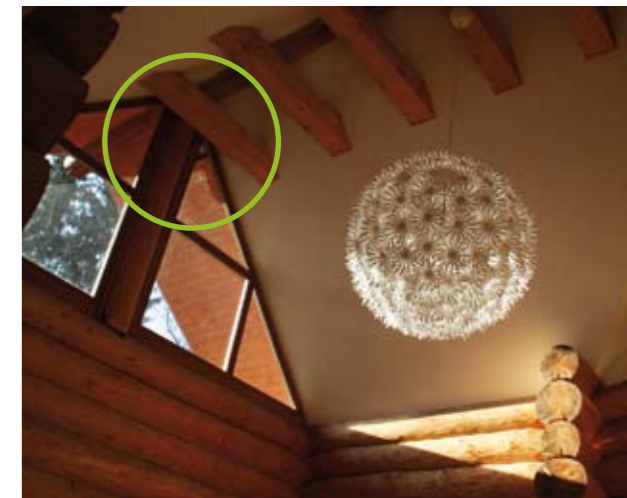
Ground floor

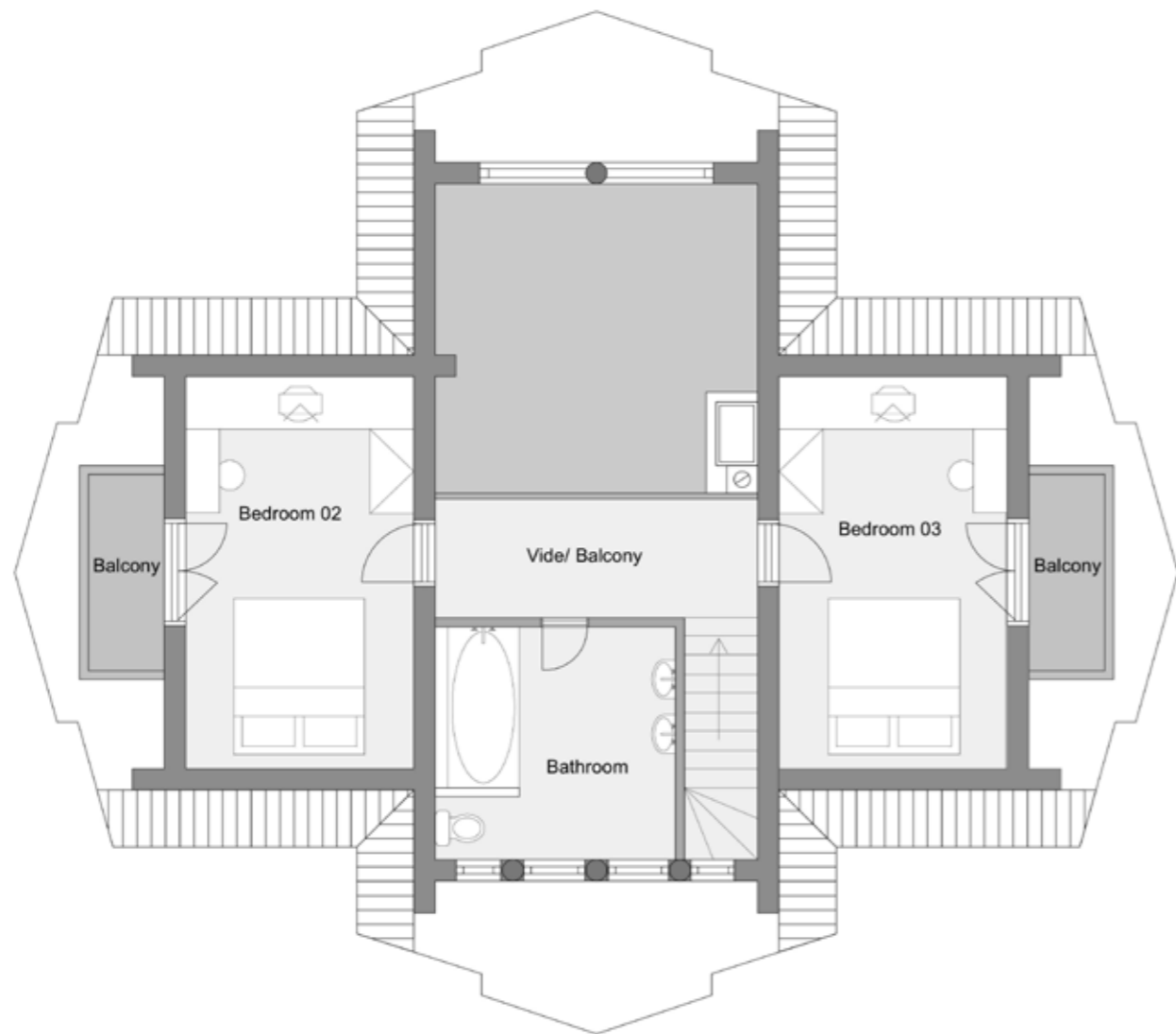
When entering the chalet you will access the hall to the ski storage room, toilet, stairs and living room with fire place and open plan kitchen. The living room comes with high ceilings which creates a wide and open space. From the large front windows you will have stunning river views and lots of light. The master bedroom situated on this floor is connected to a private en-suite bathroom. French open doors will lead you to the terrace which has prewiring and connections for a jacuzzi at the south side of the house.

Where else do you find a better place for a morning coffee with views of the river stream?

- Ski storage
- Toilet
- Hall way
- Design kitchen
- Living room with fire place
- Master bedroom with en-suite bathroom
- Patio doors to the terrace
- Parking for two cars
- Terrace and private garden

Unspoiled mountain area with
protected nature





First Floor

From the hall, stairs will lead you to the first floor mezzanine, giving access to two spacious bedrooms and a separate luxurious bathroom with bath, shower, toilet and two washbasins.

- Mezzanine
- Two spacious bedrooms
- Bath room with bath, shower, toilet and two washbasins
- Patio doors to the balconies

So much more.....

Characteristics

- Completed July 2009
- Plot area 498 m²
- Floor space 125 m²
- Wooden floor throughout
- Connection for integrated Jacuzzi on terrace
- Double glazed windows
- Intruder alarm system
- Pre-wired for satellite television
- River view
- Protected area of natural beauty

A healthy return on your investment



Imagine enjoying your investment...today



www.mydomo.com